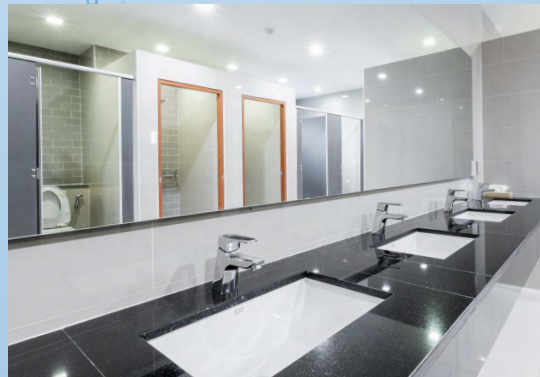




FLOKEM[®]

QUALITY • INNOVATION • PERFORMANCE

2025 CATALOG





QUALITY • INNOVATION • PERFORMANCE

2025 CATALOG

TABLE OF CONTENTS

Green Performance.....	1
Floor Care.....	2
Heavy Duty Floor Care.....	3
Carpet Care.....	4
Degreasers & Cleaners.....	5
Disinfectants.....	6
Restroom Care.....	7
Kitchen Care.....	8
Warewash.....	8
Odor Control.....	9
Hand Soap.....	9
Specialty Cleaners.....	10
Car & Truck Wash.....	10



FLO-KEM GREEN PERFORMANCE®

PRODUCTS THAT ARE SAFER FOR THE ENVIRONMENT



GREEN PERFORMANCE® is part of Chemco Products' ongoing effort to reduce our carbon footprint. These products promote safety, health and sustainable resources for ourselves and future generations. **GREEN PERFORMANCE®** products are continually updated and improved with "green" chemistry that meets the standards set by the U.S. EPA's Safer Choice guidelines.

GREEN PERFORMANCE BENEFITS TO THE END USER:

- Supports higher level of air and water quality
- Reduces waste disposal costs
- Minimizes exposure to potentially harmful chemicals
- Strong performing products at a competitive value



GREEN PERFORMANCE PROVIDES A HIGH LEVEL OF CLEANING:

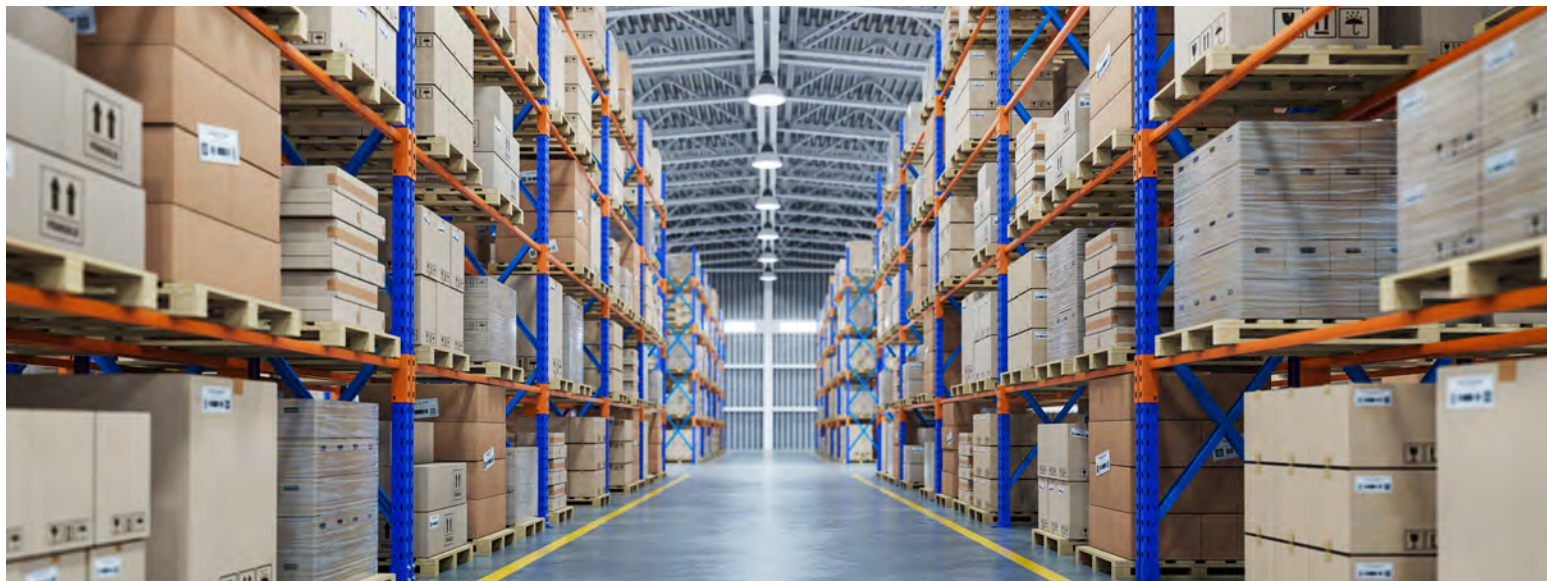
Our research and development team used a variety of "green" certified technologies to enhance performance value. These technologies include the following:

- A multiple surfactant system designed to improve soil penetration and clean surfaces faster.
- Environmentally safer solvents that rapidly emulsify soils.
- Environmentally safer chelating agents that suspend salts and allow the surfactants to be more effective in hard water.
- Mild alkali to remove greasy soils.
- Organic acids that are very efficient at removing hard water scale and stains.



FLOOR CARE

- 144 MIRAGE FLOOR FINISH** - A durable floor finish designed for low maintenance programs where buffing time is limited. A good initial lay down shine with a strong resistance to scuff and scratch marks. If a stronger gloss is desirable, **MIRAGE** can be high speed burnished using a 2,000 rpm machine. Developed for use by schools and contractors. UL certified for slip resistance.
- 9096 STARBRITE 25 SEALER-FINISH** provides a strong degree of durability and shine with fewer coats in high traffic areas. Excellent resistance to scuff and scratch marks. Cleans up quickly reducing labor time. Designed for use in schools, hospitals, office buildings and retail. Can be burnished with a 2,000 plus rpm machine. Coverage is 1500-2000 square feet per gallon. UL certified for slip resistance.
- 133 FLO-CRETE II Indoor/Outdoor Sealer** is an acrylic emulsion sealer finish for use on both indoor and outdoor non resilient flooring. Durable, chemical resistant, and limits the expansion of surface cracks. Will not whiten or peel with the exposure to sun and rain. Excellent for use on concrete, terrazzo, flagstone, quarry tile, slate and other porous natural stone surfaces. Cleaning is made easier and **FLO-CRETE II** will last 12-18 months without stripping if properly maintained. The product can be removed with a conventional stripper. Used in warehouses, schools, office buildings, light industrial and retail operations. Coverage is about 1500 square feet per gallon. UL certified for slip resistance.
- 3665 MOP & STRIP NO RINSE STRIPPER** is a labor saving stripper that requires no machine scrubbing, rinsing or neutralizing to properly prepare your resilient floors for recoating with floor finish.
- 11195 PENETRATING CONDITIONER** - Designed to protect and seal the interior of stone surfaces to include marble, travertine, granite, limestone, concrete, slate, terrazzo, brick, masonry and porous ceramic tile. Provides an invisible, breathable sealer within the substrate that repels soils and oils. Allows the substrate to be easily cleaned and maintained. Coverage will vary upon the porosity of the substrate with the average being approximately 600 to 1,000 square feet per gallon.
- 5767 NEUTRA BRITE** is an all-purpose, neutral pH, low foam cleaner designed to dry without streaking. No rinse is necessary, therefore reducing labor costs.
- 0635 FLOMATIC** is low foam cleaner for auto scrubbers and mop on application. Excellent for use in a "scrub and re-coat process" for interim floor care maintenance. Also very effective in cleaning concrete floors.
- 11328 SUPER HEAVY DUTY STRIPPER** a heavy duty floor stripper that's very effective at removing multiple layers of old floor finish. Reduces the amount of labor time as compared to conventional floor strippers. This low odor formula is good for all applications where chemical odor is an issue. Works well on all brands of floor finish.
- 150 SPRAY BUFF MAINTAINER & RESTORER** is a ready-to-use product designed to maintain and restore polished floors without damage to the finish film.



HEAVY DUTY FLOOR CARE

- 0018 **CONCRETE CLEANER** is an all-purpose cleaner and degreaser designed for removing grease and oil from concrete floors.
- 0735 **LOW FOAM CLEANER 0735** is a heavy duty version of #0635 designed for use in auto scrubbers. Very effective at removing strong grease, oil and dirt stains from concrete floors.
- 0027 **H.D. CONCRETE CLEANER (POWDERED)** is formulated for removing grease and oil from unpainted concrete floors. Used to clean heavily soiled floors in garages and warehouses.
- 0272 **KLEAN POWER (POWDERED)** is a strong concrete cleaner built for removal of grease, oil and animal fats in food distribution, garages and service stations.



CARPET CARE

- 11729 REVIVE PLUS-** New, innovative polymer technology for carpet encapsulation cleaning designed to remove heavy soils and food grease. Excellent as an interim maintenance application for your “dirtiest” carpet cleaning jobs! This product can be used at a dilution of 4-6 oz. per gallon which is lower than conventional encapsulation products. Can be also used for hot water extraction cleaning. Safe for application on stain resistant carpets. Fresh tropical medley fragrance.
- GP105 CARPET EXTRACTION CLEANER - GREEN PERFORMANCE -** This is a powerful formula that is compatible with today's generation of carpet fiber technology. Keeps carpets cleaner longer. Recommended for all types of extraction equipment and may also be used for bonnet cleaning. Clear liquid with lemon scent.
- CC700 PERFORMANCE 3 N' 1 -** This is a unique neutral formulation designed to provide the benefits of extraction cleaning, bonnet cleaning and a pre-spray in one product. **Performance 3 'N 1** is low foaming and has superior wetting ability for safe use on cotton and synthetic fibers. Amber color with a green apple scent.
- GP118 ENCAPSULATING CARPET CLEANER - GREEN PERFORMANCE -** This product uses soil crystallization technology to remove soils, spots and stains from carpets with minimal dry time. The process traps embedded soils in clear polymer crystals that can be removed during the vacuuming of the carpets. Carpets stay cleaner longer, damage to carpet fibers is reduced and carpet life is extended. Areas cleaned with this process can be ready for foot traffic one hour after cleaning. Dilute at 8 oz. per gallon. Floral fragrance.
- OO05 ANTI-FOAM SOLUTION -** Defoamer for carpet cleaner, steam, or extractor machine. Milky white emulsion with mild scent. Dilute 1 oz. per gallon.
- 255 TRAFFIC LANE CLEANER -** This product is formulated to aid in the cleaning of heavy traffic areas. Add to shampoos and soil extractors as a booster. Also effective in removing red food coloring and fruit juice stains. Clear with a lemon scent. Dilute 12 oz. per gallon for use as a traffic lane pre-spray.
- 303 DRY FOAM SHAMPOO -** Premium quality shampoo for standard rotary cleaning with optical brighteners. May be used in a dry foam shampoo machine. Iridescent light blue color with banana scent. Dilute 4 oz. per gallon.
- 374 NEUTRALIZER RINSE -** A mild acid solution formulated to not only neutralize alkaline residue, but to activate shampoo residue so the rinsing process is more complete. Leaves carpet soft and bright. Safe on stain resistant carpets. Clear liquid with mild scent.
- 5330 PRO-TEC -** An antisoil and antistatic product designed to protect carpet and upholstery. Helps to keep carpet and upholstery cleaner over the long term and makes periodic cleaning easier. When applied after shampooing or cleaning, **PRO-TEC** greatly reduces soiling and the shocking effect of static build-up. Opaque milky white liquid with pleasant scent. Dilute 25 oz. per gallon.
- 6328 ATTACK - (Bio Enzyme Odor Control):** A special enzyme formula designed to break down odor causing organic material. Excellent for eliminating pet and food stains and odors in carpets. Over 200 billion enzymes act to digest organic material down to the carpet backing. For best results, pre clean area to remove solid material and spray **ATTACK** over the soiled carpet. This product works effectively without heavy agitation. Also very effective in eliminating uric salt odors in restroom floors and walls.



DEGREASERS & CLEANERS

- GP101 HEAVY DUTY DEGREASER - GREEN PERFORMANCE** - This is a strong concentrated formula that eliminates grease, oil and kitchen fats quickly and efficiently. This product can be used in a mop on application, in auto scrubbers, pressure washers and steam cleaners. Purple color with citrus scent.
- GP103 BRITE ALL PURPOSE CLEANER - GREEN PERFORMANCE** - A strong all-purpose cleaner for any washable surface. Works well for cleaning grout and tile surfaces. Can be used in a pressure washer or auto scrubber. Free rinsing. Blue green color with a sassafras fragrance.
- GP106 NEUTRAL CLEANER - GREEN PERFORMANCE** - A neutral pH floor cleaner for all types of vinyl and stone flooring. Designed to work effectively on luxury vinyl tile, ceramic and laminate floors. Can be used daily without dulling floor finishes. Yellow color with a floral scent.
- GP107 PEROXIDE CLEANER - GREEN PERFORMANCE** - Combines the strength of hydrogen peroxide with a water soluble surfactant system. One product designed for tile/grout cleaning, carpet spotting, glass cleaning and as a general purpose cleaner on all washable surfaces. This product deodorizes as it cleans and eliminates odors at the source.
- 202 HEAVY DUTY DEGREASER** - Heavy duty degreaser for cleaning equipment, machinery, kitchen floors and all washable surfaces where grease, oil and dirt are a problem. This product can be used in a pressure washer, as a mop on or spray and wipe cleaning operation. Designed for the toughest cleaning jobs in your facility! Blue color with a lemon scent.
- 1021 GENERAL PURPOSE CLEANER 1021** - An industrial strength degreaser for cleaning grease, oil and dirt from equipment and machinery. Can be used through a pressure washer or as a spray on application.
- 203 SPRAY & WIPE CLEANER-DEGREASER** - An excellent all-purpose degreaser used as a spray on application for cleaning grease, grime and food stains. Works well on countertops, appliances and all types of washable surfaces. Blue color with a mild scent.
- 263 RMC ALL PURPOSE CLEANER** - An economical all-purpose cleaner for the general cleaning of all washable surfaces. This product is free rinsing and does not leave a film. Blue green color with a mint scent.
- 8700 APC CLEANER 8700** - A highly concentrated degreaser that's very effective on floors, walls, restroom and kitchen surfaces. This formula can be used for a wide variety of cleaning applications to include removing dirt and soot from air conditioning condensers and cleaning boat decks.
- 6822 CITRUS FRESH** - A natural organic solvent derived from orange and citrus peels. Excellent for removing grease, oil, ink, fats, tar, adhesives and other soils. Deodorizes as it cleans. Orange color with citrus scent.



**All Chemco Products' disinfectants are EPA registered
and approved for use against Covid-19**

DISINFECTANTS

- 285 **GERM SWIPE** - An excellent ready-to-use disinfectant, cleaner and deodorizer for all hard, non-porous surfaces. Approved for use against Covid-19 with a 1 minute contact time. Designed for use in hospitals, nursing homes, schools, office buildings, transportation and manufacturing facilities. Controls mold, mildew and odors. Effective disinfectant against mycobacterium tuberculosis, Parvo and a 30 second contact against Norovirus. Clear with a citrus floral scent.
- 222 **TRIPLE-2** - A 4.5% quat, hospital grade, concentrated germicidal cleaner for use in nursing homes, hospitals and schools for controlling cross contamination. **TRIPLE-2** is effective against MRSA, Norovirus, HBV, HCV, HIV and Parvovirus. Used at 2 oz. per gallon for most jobs, this product will effectively remove soils and grime from all washables surfaces. Deodorizes as it cleans with a fresh lemon scent. Yellow color.
- 11166 **NEUTRAL DISINFECTANT CLEANER** - A 2 oz. per gallon hospital grade, concentrated disinfectant cleaner deodorizer for hospitals, nursing homes, hotels, schools, restaurants and food processing plants. This neutral pH product is designed to be used on waxed floors without dulling the finish. Deodorizes as it cleans. Effective against HIV, HBV, HCV, Influenza A (H1N1) and MRSA. Yellow color with a lemon scent.
- 630 **FLO-QUAT** - Quaternary disinfectant sanitizer for use in hospitals, dairies, food processors, restaurants, bar rinse, bar tools, surgical instruments and dental equipment. Clear straw colored liquid, mild scent. Dilute 1 oz. per 4 gallons.



RESTROOM CARE

- GP104 TUB, TILE, AND BOWL CLEANER - GREEN PERFORMANCE** - Cleans, deodorizes and removes scale discoloration and rust stains from shower stalls, sinks, tubs, toilets bowls and fixtures. Blue color with tropical scent.
- 366 FLO-KLING HD PORC/TILE/BOWL** - (Phosphoric Acid) Formulated for use in removing hard water deposits and soap scum from showers, toilet bowls, urinals and sinks. Very effective on tile countertops. Cleans and shines bathroom fixtures. Green color with bubble gum scent.
- 360 EMULSION BOWL CLEANER** - A 23% hydrochloric acid emulsion bowl cleaner for those hard to remove stains and hard water deposits. Milky white liquid with cherry scent.
- 362 FLO-KLING REGULAR BOWL CLEANER** - A 9.5% hydrochloric acid bowl cleaner formulated for daily use in toilet bowls and urinals. New improved clinging formula. Can be used in ceramic showers. Red color with mint scent.
- 239 RESTROOM STAIN REMOVER WITH BLEACH** - Removes black mildew stains from sinks, showers, tubs and other areas in the restroom. Spray on the black stains and completely cover the affected areas. Don't rinse until the stains disappear. One application usually does the job. For extremely heavy buildup, wait 30 minutes and apply again. Clear yellow liquid with bleach scent.
- 420 SCUM-OFF SHOWER & TILE CLEANER** - An alkaline based cleaner designed to remove soap scum and body oils from showers, tubs and countertops. Excellent for removing water stains from drinking fountains and stainless steel sinks. Amber color with lemon scent.
- 6328 ATTACK** - A special enzyme formula designed to break down uric salts in restrooms. **ATTACK** will effectively digest and eliminate odors from urine and other organic materials that become embedded in the pores of tile floors and walls. Use as a mop on application for floors and spray on application for walls around urinals. Restrooms smell better over time with periodic application of **ATTACK**.
- 7950 CREME CLEANSER** - Cream cleanser with soft abrasives. Contains enzyme-producing bacteria for drain maintaining and deodorizing. Polishes while cleaning. Excellent for use on porcelain, ceramic, chrome, brass, fiberglass and other hard surfaces. Off white color with mint scent.

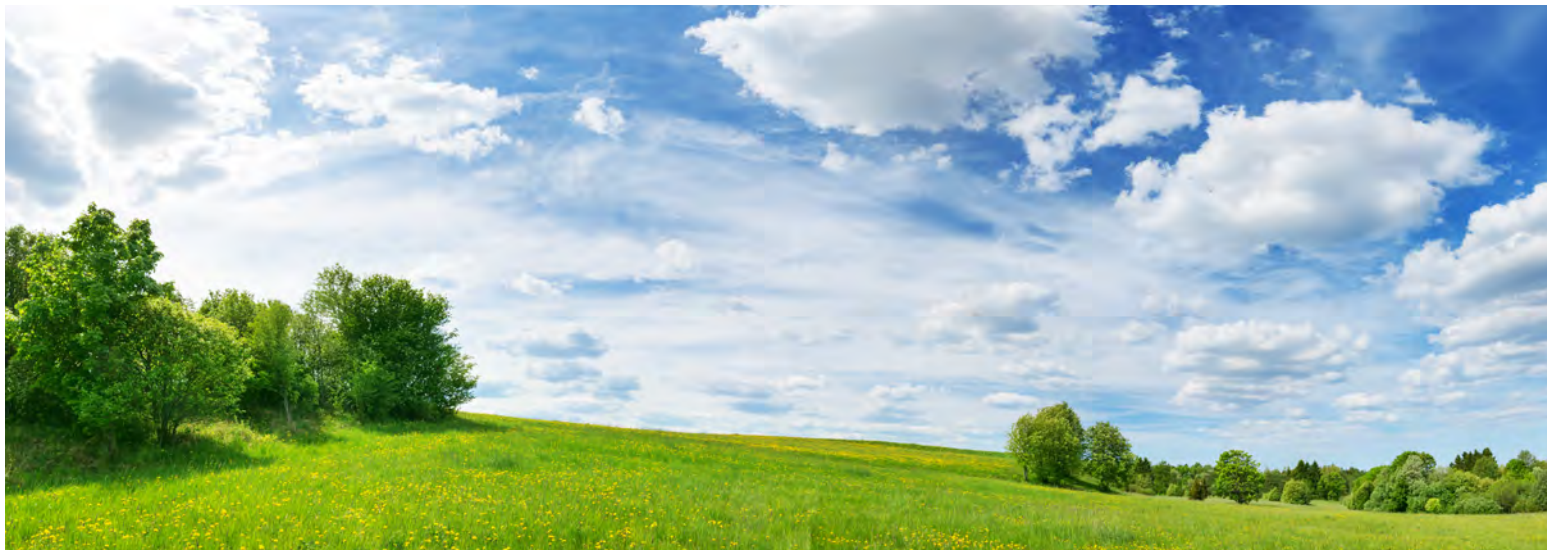


KITCHEN CARE

- 1495 **BLAST** - High powered grill and oven cleaner, thickened to adhere to overhead and vertical surfaces. Very effective in removing carbon soils such as baked on fats, sugars and greases. Milky white color with mild scent.
- 398 **OVEN BRITE** - Heavy-duty industrial oven cleaner for cleaning ovens and deep fat fryers. **OVEN BRITE** liquid is sprayed or brushed on full strength. Use on the most demanding jobs for the removal of oils, fats, grease and carbon deposits. Yellow color with lemon scent.
- 811 **LIQUID DISH** - A general purpose detergent for glasses, china, silverware, pots and pans. Excellent for cleaning walls, floors, and appliances. Makes an excellent cleaner for hand cleaning of automobiles. Blue-green color with mild scent.
- 11505 **AP LIQUID DETERGENT** - Our top of the line manual dish washing liquid. Highly concentrated for use in cleaning glasses, silverware, plates, pots and pans. Blue green color with a mild scent.
- 5195 **FLO-ZYME** - A unique enzyme/live bacteria formula designed to break down organic matter (proteins, fats, oils and grease) in sinks, floor drains, floors and other drain systems. Helps to provide for the free flow of water in kitchen pipes. Reduces foul odors coming from drain systems. Helps to eliminate odors from kitchen and restroom floors. Contains 250 billion active enzymes. White color with a pleasant scent.
- 848 **LIME DESCALER** - Removes lime, food film, and scale from stainless steel, aluminum, ceramic, glass, plastic and concrete. Clear blue color with mild scent.

WAREWASH

- 9693 **DISHMACHINE DETERGENT LO TEMP** - An economical detergent for use in low temp dish machines. Disperses immediately for instant action. Clear pink liquid with mild scent.
- 9694 **RINSE AID** - Formulated as a drying agent for rinse injectors. Eliminates water spotting of glasses and dishes. Blue color with mild odor.



ODOR CONTROL

- 11192 **ENZYME ODOR CONTROL PINA COLADA** - Eliminates heavy odors from sinks, drains, and around garbage containers. Very effective for pet odors in carpets, smoke and urine odors.
- 305 **WSD FRESCO** - Deodorant, odor counteractant formulated to be used as a room spray and additive to carpet steam cleaning compounds, rug shampoo and floor cleaning solutions. Light yellow color with floral scent.
- 308 **WSD FLORAL** - Deodorant, odor counteractant formulated to be used as a room spray and additive to carpet steam cleaning compounds, rug shampoo and floor cleaning solutions. Orange in color with honeymist scent.
- 9047 **WSD LEMON** - Deodorant, odor counteractant formulated to be used as a room spray and additive to carpet steam cleaning compounds, rug shampoo and floor cleaning solutions. Yellow in color with lemon scent.
- 9051 **WSD CHERRY** - Deodorant, odor counteractant formulated to be used as a room spray and additive to carpet steam cleaning compounds, rug shampoo and floor cleaning solutions. Red in color with cherry scent.



HAND SOAP

- 11270 **FOAMING HAND SOAP** - Customers now have the convenience of using a pre-lathered soap for hand washing. Gentle and non-irritating, this product will freshen and soften the hands. Designed for use in foaming hand soap dispensers. Blue color with fresh scent.
- 6532 **COCONUT HAIR & BODY SHAMPOO** - A lotionized pH balanced product designed for use as a hair and body shampoo. Recommended for use in health and fitness clubs. White pearlized viscous liquid with coconut scent.
- 9289 **AB 3000 ANTIBACTERIAL HAND SOAP** - This anti-microbial soap contains conditioners and moisturizers designed to leave hands soft and supple. For use in schools, offices, restaurants, medical facilities and in the home. Bright orange color with floral scent.
- 9869 **WHITE PEARLIZED HAND SOAP** - A premium hand and body soap enriched with lanolin. Excellent for use in soap dispensers and as a body shampoo for showers. White pearlized viscous liquid with linen scent.



GLASS/SPECIALTY CLEANERS

- 358 **RTU GLASS & HARD SURFACE CLEANER** - Formulated as a ready to use glass and hard surface cleaner to cut and remove dirt, grime and pollution film without premature drying or streaking. Excellent all-purpose cleaner for hard surfaces such as stove tops, appliances and chrome. Blue color with mild scent.
- 9005 **GLASS CLEANER CONC 9005** - Mix 20 to 1 with water. This strong, non-streaking formula will cut dirt, smoke residue and traffic film with ease. Use on windows, windshields, mirrors and chrome. Blue color with cucumber scent.
- 11576 **SOLAR PANEL CLEANER** - Formulated specifically for removing dirt, dust, pollen, bird droppings and other debris from solar panels. Keeping solar panels clean will improve their efficiency. This product is in compliance with CARB VOC regulations and AQMD VOC content rules. SOLAR PANEL CLEANER is neutral in pH, does not contain a fragrance or dye and is streak free.
- 3480 **SQUEEGEE** - A specially formulated window cleaner for use with a squeegee. Leaves no streaks and enhances squeegee glide action. Amber color with mild scent.
- 1293 **SHIELD ALL** - (Silicone Protectant) A new water based protective coating that beautifies and protects vinyl, plastic, rubber, plexiglass and leather. Protects against air pollution and ultra violet rays that harden or crack these surfaces. Milky color with lemon scent.
- 610 **ACHIEVE** - A silicone furniture polish that leaves a protective coating free from sticky oil or residues that collect dust. Safe on most furniture, chrome, stainless steel, plastic surfaces, vinyl upholstery and many other surfaces. Water based. Milky color with lemon scent.



TRUCK & CAR WASH

- 3825 **PINK WASH & WAX** - A concentrated, liquid detergent and polish wax designed for use in automatic car wash. It is a viscous material designed to be safe on fabrics and on all metal and painted surfaces. **PINK WASH & WAX** incorporates the use of a unique additive that gives a wax-like luster to automotive finishes after its application in shampooing. Clear pink liquid with mild scent.
- 6540 **DEGREASER TRUCKWASH** - A highly concentrated degreaser for removing grease, oil and dirt from trucks, buses and diesel engines. Can be used through a foam or pressure washer application.